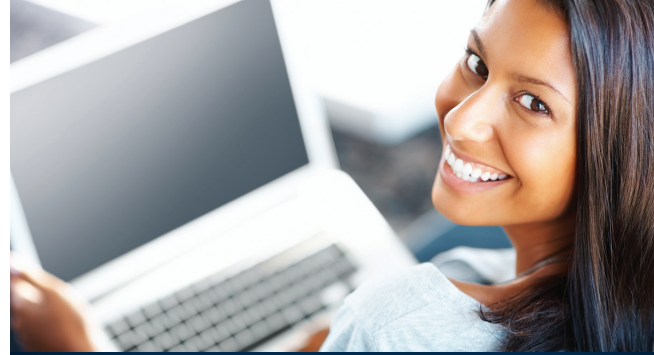


Bachelor of Science: **NURSING** **(RN TO BSN)** **ALL COURSES ONLINE!**



CORE (GENERAL EDUCATION) 28 CREDIT HOURS

BIO	300	Nutrient Metabolism	4
COM	300	Professional Communication	4
ENG	301	American Literature	4
HUM	315	Critical Thinking	4
MTH	305	Statistics	4
PSY	230	Abnormal Psychology	4
SOC	300	Diversity in Society	4

CONCENTRATION 48 CREDIT HOURS

NUR	300	Nursing in the Contemporary US Healthcare System	4
NUR	312	Nursing in Gerontology	4
NUR	314	Nursing Informatics and Technology	4
NUR	320	Health and Wellness Assessment	4
NUR	325	Improving Quality and Safety in Nursing	4
NUR	335	Population Focused Nursing	4
NUR	410	Research in Nursing	5
NUR	425	Leadership and Management in Nursing	5
NUR	432	Disaster Management and Nursing	5
NUR	450	Legal and Ethical Issues in Nursing	4
NUR	491	Critical Issues and Strategies in Nursing	5

TOTAL QUARTER CREDIT HOURS REQUIRED FOR COMPLETION OF THE BACCALAUREATE DEGREE 76

Required for Consideration into Program:

Candidates must have an Associate Degree in Nursing and have a current and unencumbered RN license. This program has specific academic requirements for admission.



SAMPLE SCHEDULE*

**FULL-TIME/
18 MONTHS**** **PART-TIME/
27 MONTHS****

TERM 1 (12)	TERM 1 (8)
PSY 230 (4)	PSY 230 (4)
NUR 300 (4)	NUR 300 (4)
NUR 314 (4)	
TERM 2 (12)	TERM 2 (8)
HUM 315 (4)	HUM 315 (4)
NUR 320 (4)	NUR 320 (4)
NUR 325 (4)	
TERM 3 (12)	TERM 3 (8)
SOC 300 (4)	NUR 314 (4)
NUR 312 (4)	SOC 300 (4)
BIO 300 (4)	
TERM 4 (12)	TERM 4 (8)
MTH 305 (4)	NUR 325 (4)
NUR 335 (4)	MTH 305 (4)
COM 300 (4)	
TERM 5 (14)	TERM 5 (8)
NUR 410 (5)	NUR 312 (4)
NUR 425 (4)	BIO 300 (4)
NUR 450 (5)	
TERM 6 (14)	TERM 6 (8)
ENG 301 (4)	NUR 335 (4)
NUR 432 (5)	COM 300 (4)
NUR 491 (5)	
TERM 7 (14)	TERM 7 (9)
	NUR 410 (5)
	ENG 301 (4)
TERM 8 (10)	TERM 8 (10)
	NUR 432 (5)
	NUR 491 (5)
TERM 9 (9)	TERM 9 (9)
	NUR 425 (5)
	NUR 450 (4)

*Courses may not be offered in the sequence noted.

**Based on student taking courses as scheduled and completing on-time

SEE SECOND PAGE FOR COURSE DETAILS.

BIO 300 NUTRIENT METABOLISM* (4)

This course provides an examination of the nutritional biochemistry and the metabolic role of nutrients throughout the human life cycle. Studies recommended intakes of nutrients, along with the complete cycle of nutrient ingestion; absorption, utilization, and excretion are discussed. Examines advanced concepts in physiology and biochemistry in order to explain nutrient function and interdependence

HUM 315 CRITICAL THINKING* (4)

An exploration of the essential characteristics of good arguments. Emphasis is placed on the identification, interpretation, and evaluation of written arguments as well as on the ability to justify interpretative and evaluative judgments. Central to the course is the ability to recognize why a good argument persuades and why a misleading or fallacious argument does not. Prerequisite: ENG 112 or Academic Dean Approval.

COM 300 PROFESSIONAL COMMUNICATION* (4)

In today's world, successful professionals are expected to be excellent communicators. This course focuses on how to write and speak effectively, and to think clearly. In addition to professional writing, students need to master the techniques of e-mail and virtual communication, to understand how to draft unambiguous business letters, produce executive summaries and make oral presentations, in crisp, clear and accurate prose. This course will focus on the ability to capture facts, write observations, and to analyze and synthesize data, so that others can take action.

ENG 301 AMERICAN LITERATURE* (4)

A survey of American literature during the 19th and the 20th centuries. Literature, speech, and writing are assimilated into course experiences. Students are exposed to a variety of literary genres (novels, short stories, dramas, poetry, and essays). Students learn to interpret selected works, and continue to develop their reading and writing skills. Prerequisite: ENG 112 or Academic Dean Approval.

MTH 305 STATISTICS* (4)

An introduction to descriptive and inferential statistics, with an emphasis on the collection, analysis, and interpretation of data. The student will learn to interpret statistical information, to discriminate between sound and unsound statistical methods and results, and to make more rational decisions when confronted by statistical data. Prerequisite: MTH 115, MTH 120 or Academic Dean Approval.

PSY 230 ABNORMAL PSYCHOLOGY* (4)

A study of behavior disorders to lead to an understanding of prevention, diagnosis, and treatment implemented in psychopathological entities. The symptom etiology of established mental illness classifications is examined to foster a clear understanding of the complexity of the evolution and reversal of abnormal behaviors. Prerequisite: PSY 101 or equivalent

SOC 300 DIVERSITY IN SOCIETY* (4)

This course is designed to provide students with the knowledge, skills and behaviors needed to demonstrate culturally sensitive competence in today's diverse global environment. Emphasis will be placed on the role of gender, race, ethnicity, religion, and economics on behavior of individuals and groups. The goal of the course is to provide students with an appreciation of human diversity and to work effectively with groups and individuals in an increasingly diverse environment.

NUR 300 NURSING IN THE CONTEMPORARY US HEALTHCARE SYSTEM (4)

In this course, students will participate in a review of the basic structure and operations of the US health care system, and the significant role that nursing professionals play as part of the system. Following a brief historical overview, the current status of health care organizations, national health care policies and health care needs of the US population will be covered. Students will examine the impact of health care reform and other legislation. Topics will include the nursing shortage, the Institute of Medicine's report on the Future of Nursing, managed care/case management and health care disparities in the US system.

NUR 312 NURSING IN GERONTOLOGY (4)

Applying the principle that healthy aging is an expectation of every elder, this course addresses the human potential possible as people all age. It considers the demographics of, attitudes toward, and politics surrounding the aging person. Students will study the biological, psychological, and social aspects of nursing the elders in our society, considering the diversity of situations that may be encountered.

NUR 314 NURSING INFORMATICS AND TECHNOLOGY (4)

Nursing informatics integrates nursing science, computer science and information science in identifying, collecting, processing, and managing data and information to support nursing practice, administration, education, research and the expansion of nursing knowledge. (American Nurses Association, 2010). In today's healthcare settings it is critical that nurses are competent as users of informatics and information systems. With this definition as a framework, the course will explore the data sources and technological tools and methods used by nurses to further the quality and effectiveness of care delivery in today's complex healthcare environment.

NUR 320 HEALTH AND WELLNESS ASSESSMENT (4)

This course will build upon the student's basic knowledge of patient assessment and physical examination. Content will focus on nursing assessment and interventions aimed at promoting health and wellness and individual risk reduction. Students will complete a health and wellness assessment of a child, an adult and an older adult and incorporate health promotion and disease prevention concepts as well as healthy behaviors. Students will explore the role of complementary and alternative therapies in health and wellness care.

NUR 325 IMPROVING QUALITY AND SAFETY IN NURSING (4)

Providing nursing care that leads to quality outcomes and is protective of patient safety are both essential to professional nursing practice. A major initiative within the health-care industry is to improve patient safety and reduce errors that impact patient outcomes. This course will focus on the processes and practices of quality assessment and continuous quality improvement in healthcare. Students will examine a variety of health indicators that reflect nursing accountabilities. Students will examine the issue of patient safety, risk appraisal, and medical error reduction. They will create a model safety or quality improvement initiative for a sample group of clients or nursing personnel.

NUR 335 POPULATION FOCUSED NURSING (4)

Models of health promotion, health maintenance, education, disease prevention, and coordination of care for individuals, families, groups, and communities. Epidemiology, identification of populations at risk, exploring rural, suburban, and urban environments, and health evaluation in various community settings provide a foundation for meaningful experiential learning in the practicum. Through application of community and public health theory and principles, students will explore and implement the roles of the nurse as teacher, collaborator, advocate, investigator, researcher, and direct care provider.

NUR 410 RESEARCH IN NURSING (5)

Generating, reading, evaluating, and using nursing research. Students study the systematic process of inquiry, using established guidelines to produce unbiased and useful answers to questions about nursing practice. Research will be explored for its various constructs, including synthesis of existing findings into a rational approach to practice, describing phenomena that affect health, exploring solutions to current and emerging problems, and testing approaches to client care to determine their effectiveness. Students will also develop their own research questions and begin a research project. Prerequisite or Corequisite: MTH 305.

NUR 425 LEADERSHIP AND MANAGEMENT IN NURSING (5)

This course focuses on leadership and management principles that guide professional nursing across practice settings. Leadership theories and concepts are emphasized, including the identification of key organizational structures, mission statements, and developing organizational cultures. Students will examine professional communication and team work, collaboration and conflict resolution, delegation and supervision, resource management, workforce motivation, and managing and leading change. Core competencies for nurse leaders will be addressed. The course also introduces the integration of ethical and legal principles in nursing leadership roles.

NUR 432 DISASTER MANAGEMENT AND NURSING (5)

This course focuses on the preparation for, response to, and management of the array of natural and man-made disasters and/or emergencies that may occur at various levels of society. Students will examine the existing and proposed pre-planning measures, the need for well-coordinated responses by appropriate organizations, and the management of ongoing issues as disasters or emergencies evolve. The role of the nurse in a variety of situations, agencies, and levels of government will be explored. Students will have the opportunity to experience the work of the many agencies involved in disaster/emergency management.

NUR 450 LEGAL AND ETHICAL ISSUES IN NURSING (4)

An exploration of the most significant legal and ethical issues and concerns related to the practice of nursing and the delivery of health care. Ethical theories and dilemmas are discussed and analyzed. The course addresses the sources of law as well as its current application in the health care arena. Standards of care, jurisdiction, and liability are considered as these apply to one's own practice. Emphasis is on negligence, the importance of timely and clear documentation in whatever form required, and managing risk in the health care organization. This course is designed to assist nurses in taking an active role within institutional settings regarding the resolution of legal and ethical issues which arise.

NUR 491 CRITICAL ISSUES AND STRATEGIES IN NURSING (5)

This capstone course focuses on the strategies that nurses can use in career development, understanding professional organizations that influence the individual and the profession, interprofessional relations, and health system issues. Historical perspectives on nursing, other health professions, and organizations are explored in terms of history's influence on current relationships. Nursing theory is explored as a method of explaining visions of reality which describe the complex process of nursing care. Political issues will be addressed in terms of their effect and influence on nursing and health care.